



**DiskRescue
2009**

Defragment your hard drive for maximum PC performance

DiskRescue 2009 Manual

1ST EDITION

What is DiskRescue?

Data fragmentation is an invisible, but harmful, threat that erodes the performance of your PC from within. Unless checked, disk fragmentation is largely inevitable, nonetheless it is also slowly incremental, meaning that you may not even notice the gradual degradation of the performance of your machine. However, over time and if left unfixed, disk defragmentation will contribute to a significant loss of disk performance and an overall slowing of your PC's speed.

DiskRescue comes to save your system from the harmful effects of disk fragmentation. With characteristic cool Uniblue styling and simple-to-use design, DiskRescue is the effective solution to the fragmentation of your hard disk. Able to run on command, or launch defrags proactively when scheduled, DiskRescue fixes your disk fragmentation problems leaving you free to enjoy improved performance.

Conventions used in Help



(Figure 1)

This manual explains everything you need to know to be able to boost your system's performance with DiskRescue. Organized into three chapters. Help has been designed to follow the logical structure of DiskRescue.

- 1 To open DiskRescue from the Windows Start menu, click on the **Start** menu button, and move up to the **All Programs** (or **Programs**) menu item (figure 1).
- 2 In the resulting cascading menu, select the Uniblue DiskRescue 2009 folder and, in the next menu, choose DiskRescue itself (figure 1). ▶

Also pay special attention to text, highlighted in blue or red, which is set apart from the rest of the text:

! Indicates warnings and items of extreme importance

i Indicates important information

Where do I go from here?

If you are unfamiliar with disk defragmentation, and want to learn more, you can read [Chapter 1: An introduction to DiskRescue](#).

For more information about DiskRescue you can go directly to [Chapter 2: Launching, registering and updating DiskRescue](#) for more help.

For instructions on using DiskRescue read [Chapter 3: The DiskRescue user interface](#).

Contents

Chapter 1	6	An introduction to DiskRescue
1.1	6	What does DiskRescue do?
1.2	7	Feature overview
1.3	7	Will DiskRescue make a difference?
Chapter 2	8	Launching, registering and updating DiskRescue
2.1	8	System requirements
2.2	9	Launching DiskRescue
2.3	11	Online resources and support
2.4	13	Purchasing your product
2.5	14	Registering DiskRescue
2.6	17	ContinuousProtection
Chapter 3	18	The DiskRescue user interface
3.1	18	The Overview screen
3.2	20	The Hard drive scan screen
3.3	22	The Scheduler screen
3.4	24	The Settings screen

1

An introduction to DiskRescue

Congratulations on purchasing DiskRescue from Uniblue. This section gives an introduction into DiskRescue, what it does and how it can help you.

1.1

What does DiskRescue do?

Disk fragmentation might be invisible but, over time, the effects will be very apparent in terms of degraded system performance, as your PC spends more and more time searching for the various fragments of files that have become increasingly spread over your hard drive.

DiskRescue searches your entire hard disk mapping the location of all data and every single file. Having established where your information has been stored DiskRescue then sets to the challenging task of bringing back together the broken and fractured files into contiguous spaces. Once your hard disk data has been defragmented you will experience reduced seek time and rotational delay which directly translates into faster PC startup times, shorter delays in launching software and faster data storage and retrieval.

Not only can you run disk defragments at the click of a button, you can arrange for DiskRescue to take a proactive approach to ongoing disk defragmentation. By scheduling DiskRescue to run a hard drive defragment whenever your PC is idle, or at prescribed regular, or one off, times and dates you can be proactive in defragmenting your disk and make sure that you never suffer disk fragmentation induced system performance losses again.

1.2 Features overview

DiskRescue is a powerful and effective hard disk defragmentation tool, for delivering improved overall PC performance, and which includes:

Powerful disk defragmentation engine to reorganize the disordered data on your disk and recombine files and data that have been stored in discontinuous sectors. Disk defragmentation will improve hard disk read and write times delivering bottom line PC performance improvements.

Detailed scan results reports telling you how many fragmented files you have on your computer and what this amounts to as a percentage of your total disk space.

Scan and defrag scheduler allowing you proactively to run regular system scans and disk defragments ensuring that your hard disk remains defragmented and that your PC's performance is optimal.

Computer information so you know, at a glance, all the key specifications of your PC, such as make, model and disk size.

A contemporary and intuitive interface integrating attractive animations, stylish windows and widgets, and helpful scrolling menus.

1.3 Will DiskRescue make a difference?

At Uniblue, we are renowned for building easy-to-use yet powerful utility products and DiskRescue is no exception. Regardless of your level computer literacy, you will find DiskRescue simple and intuitive.

Combining clear controls with a powerful disk defragmentation engine and defrag scheduler, DiskRescue improves disk read/write speeds, improving your computer's bottom line performance.

2

Launching, registering and updating DiskRescue

Learn how to install, launch and update DiskRescue. This chapter also includes system requirements, as well as procedures for purchasing and registering your product.

2.1 DiskRescue system requirements

DiskRescue minimum requirements:

- Intel Pentium 3 500MHz or equivalent processor
- 256 MB RAM
- 100MB free hard disk space*
- Graphics mode 1024x768, high color (highest 32-bit)
- Internet Explorer 5.5
- Microsoft Windows XP / Vista (32-bit)

DiskRescue recommended requirements:

- Intel Pentium 4 100MHz or equivalent processor
- 512 MB RAM
- 200MB free hard disk space
- Graphics mode 1024x768, high color (highest 32-bit)
- Internet Explorer 6
- Microsoft Windows XP / Vista (32-bit)

* You will also need at least 10% of your hard disk to be free for the scan to work.

i DiskRescue automatically identifies your operating system so you won't need to configure any settings manually.

2.2 Launching DiskRescue



(Figure 2)

Subsequent launches of DiskRescue

After the initial launch (and depending on the settings chosen: refer to section [3.4: The Settings screen](#) for more information) DiskRescue can be started as follows: ►




(Figure 3)


Start menu

The standard way to access DiskRescue is through the Start menu (figure 1).


1 Desktop

Depending on what you chose during installation, the DiskRescue icon  will be placed on your desktop. Double-click on this icon to launch the application (figure 3).

2 Notification area (commonly referred to as the system tray)

DiskRescue can be accessed by double-clicking on the DiskRescue icon  in the notification area (the section at the bottom right of the screen, which also displays the clock) (figure 3).

3 Quick launch icon

Again, depending on whether or not you chose this option when installing DiskRescue you may also click on the icon on the quick launch bar at the bottom of your screen  (figure 3).

2.3 Online resources and support

In addition to this help manual the following support and other services are also available:

Downloads

We update our products on an ongoing basis, making improvements and adding new features. Download all the latest updates from our download pages by visiting our download center: <http://www.liutilities.com/support/downloads/>.

Premium support

Our premium support service is provided by dedicated customer care and technical support professionals. For more information visit our support centre: <http://www.liutilities.com/support/>.

Newsletter tutorials

We publish articles, tips and advice in our regular newsletters. Register now to receive the best help and information on how to handle and protect your data using Uniblue products. For more details visit our website to subscribe to our free newsletter: <http://www.uniblue.com>. ►



(Figure 4)

1 LiveUpdate

DiskRescue also includes LiveUpdate which, when selected, will automatically scan for updates to your DiskRescue software and components. To use this function simply click on **Check for updates** at the bottom of the screen (figure 4).

2.4 Purchasing DiskRescue

Visit the DiskRescue page on our website at <http://www.liutilities.com/products/DiskRescue/> (click on this hyperlink to go to our website directly or paste the link into your browser). Next click on the **Purchase Now** button (it may also say **Buy Now** on other pages) on the right of the page to proceed to the DiskRescue purchase page.

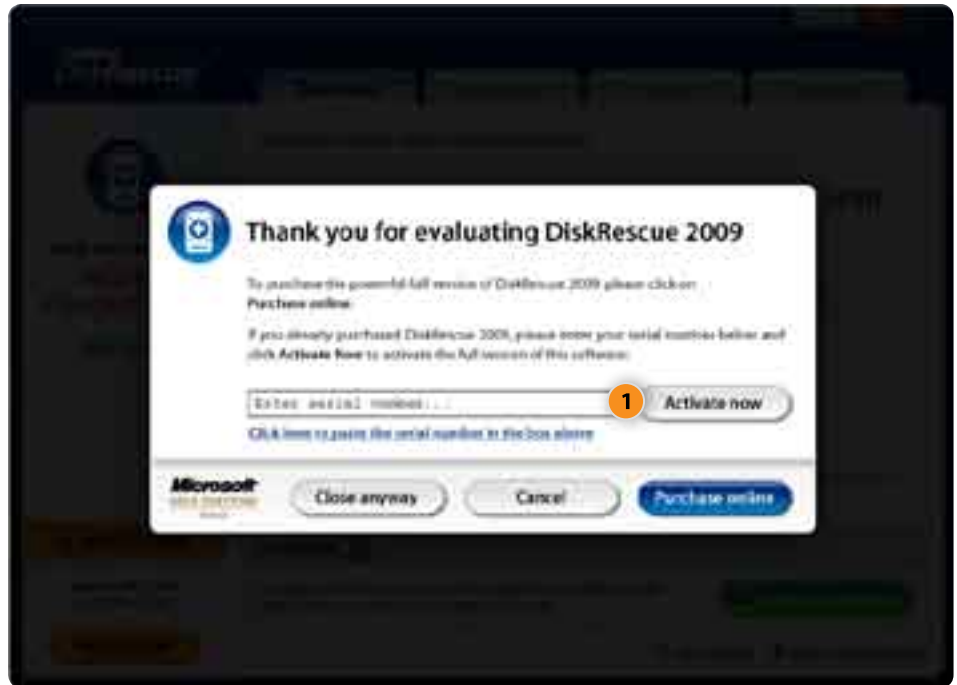
Or, if you already have the trial version of DiskRescue installed, click on the orange **Register Now** button at the bottom left of the DiskRescue home screen, which will prompt a web browser window to appear. On this page click **Add to shopping cart**. You will then be taken to the purchase page where can then complete your purchase details before clicking on **Submit your order**. Please note that our online store is tested daily to ensure the highest levels of security for your payment.

2.5 Registering DiskRescue



(Figure 5)

- 1 When you buy your copy of DiskRescue, you then need to register it in order to enjoy the following benefits including (figure 5):
 - Allowing you to defragment your hard drive
 - Allowing you to schedule disk scans and hard drive defrags
 - Removing the registration reminder window that DiskRescue displays on closing the product ▶



(Figure 6)

In order to register DiskRescue you will first need to purchase the product (see section [2.4: Purchasing DiskRescue](#) for more information). After purchase you will receive, by email, a serial number that needs to be entered into the product to register it. The serial number entry window ([figure 6](#)) can be accessed by clicking on the **Register Now** button to the bottom left of all screens ([figure 5](#)).

- 1 Then insert the serial number in the **Enter Serial Number** field and click on **Activate Now** ([figure 6](#)). When entering the serial number please make sure that you are entering the number for the correct product. For DiskRescue the serial number should start with the letters DR and be in the following format (where x identifies a different letter or number in each case): DR-XXXXX-XXXXX-XXXXX-XXXXX-XXXXX-XXXXX. ►



(Figure 7)

- 1 To confirm that you are logged in click on the **About DiskRescue 2009** button at the bottom right of the DiskRescue interface (figure 7) and a screen will appear which includes information confirming the registration status of DiskRescue.

i Before registering DiskRescue although you will be able to scan and monitor your system you will not be able to implement any tweaks or other system improvements. To optimize your system you need to activate the full version of the application by purchasing DiskRescue and then entering the serial number.

2.6 ActiveProtection

Uniblue's ActiveProtection is a software support service which entitles you to enjoy a generous range of benefits including:

- the latest software downloaded directly to your PC
- online expert support
- cost savings over time
- the ability to install software on three PCs
- and much more

When you purchase any Uniblue product you also receive ActiveProtection, for one year, from the product purchase date. At the end of your one year term you will then need to renew your product (so extending your ActiveProtection coverage) if you wish ActiveProtection to continue automatically updating your software for another year.

Unless renewed, your Uniblue software will not be updated and will be unable to solve the very latest PC problems and system issues. Product renewal, and the extension of ActiveProtection, can be completed either manually, or automatically, depending on when you purchased your product and what options you chose.

3

The DiskRescue user interface

This chapter explains the five primary screens of the DiskRescue user interface.

3.1

The Overview screen



(Figure 8)

When DiskRescue starts, the system Overview screen is the default screen (figure 8). To navigate from one screen to the other, you need to click on the tabs in the navigation panel, along the top of the screen. ▶

This Overview screen is separated into two sections: the narrow **Hard drive status** column along the left edge, and the **Hard drive overview** section on the right (*figure 8*).

1 Hard drive status

Based on the results of the last scan the Disk performance column shows a graphic clearly stating whether or not your disk is fragmented, and therefore if it needs defragmenting. Beneath this graphic there is an option to **Start scan**, clicking on which will prompt DiskRescue to start scanning your system (*figure 8*).

2 Hard drive overview

The main area contains three sections:

Harddrive status after last scan and/or defrag giving you a summary of the time and date of the last scan and the number of fragmented files found. This section also includes the **Start scan** button and a drop down menu that lets you choose the disk to be scanned.

LiveUpdate including a **Check for updates** button with which DiskRescue will search the Internet for updates to the application's software and components.

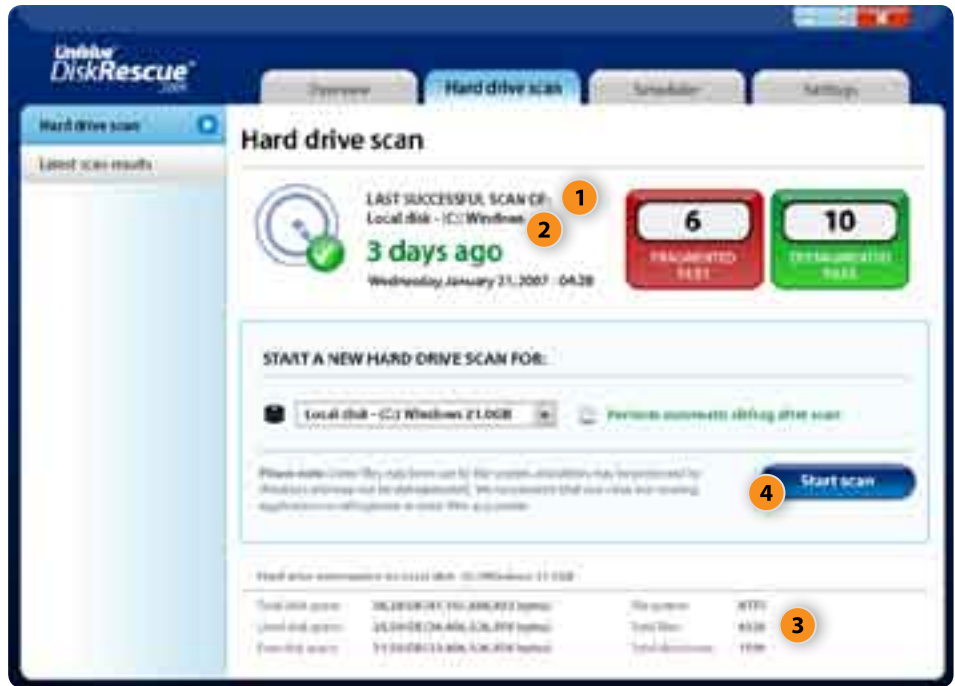
3.2 The Hard drive scan screen



(Figure 9)

To access the system scan screen, click on the **Hard drive scan** tab on the navigation panel (figure 9). On the left-hand side of the **Hard drive scan** screen you will see a sub-menu with two entries: **Hard drive scan** and **Last scan results**. Clicking on each of these functions alternates relevant views or windows.

Hard drive scan is the default window within the Hard drive scan screen. From here you can see the date and results of the last scan and, if you have more than one disk on your system, choose the particular drive to be scanned. ►

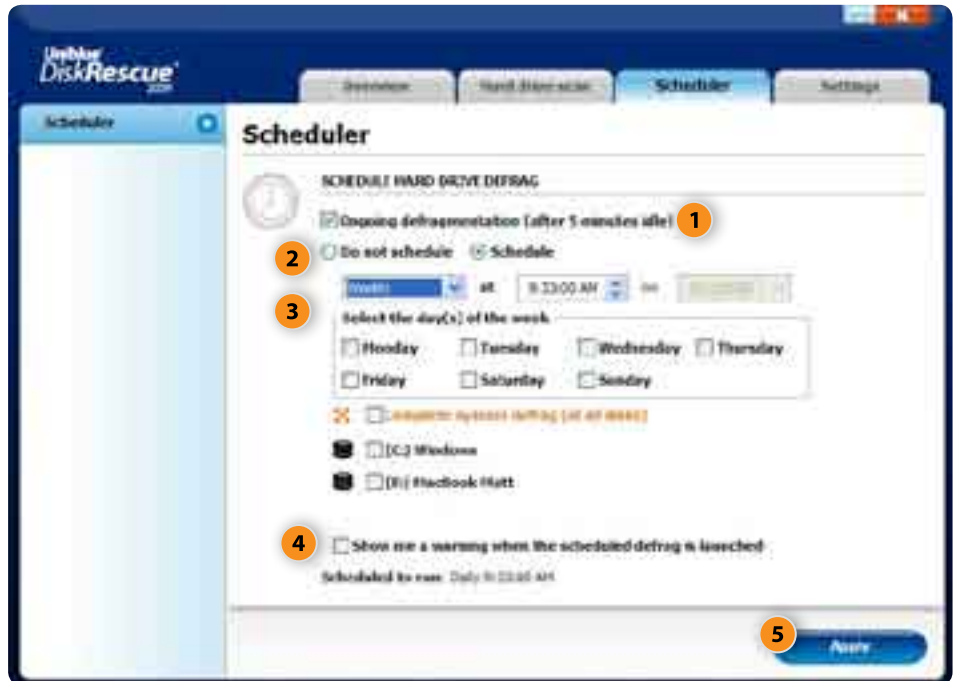


(Figure 10)

Latest scan results is where DiskRescue displays the results of the scan performed on your system, listing the numbers of fragmented files that require defragmentation, along with a detailed range of other hard disk information (*figure 10*). Note that once you have run your scan, the Last scan results window appears automatically to reveal the number of fragmented files found by DiskRescue.

- 1 The Results bar gives a simple report of the number of fragmented files found on your system.
- 2 Below this results bar DiskRescue lists the particular disk, on your system, that was scanned.
- 3 The main section of the screen gives detailed information on the hard drive selected from the dropdown.
- 4 The **Start scan** button launches DiskRescue's disk scanning engine, and starts DiskRescue scanning your computer's hard drive.

3.3 The Scheduler screen



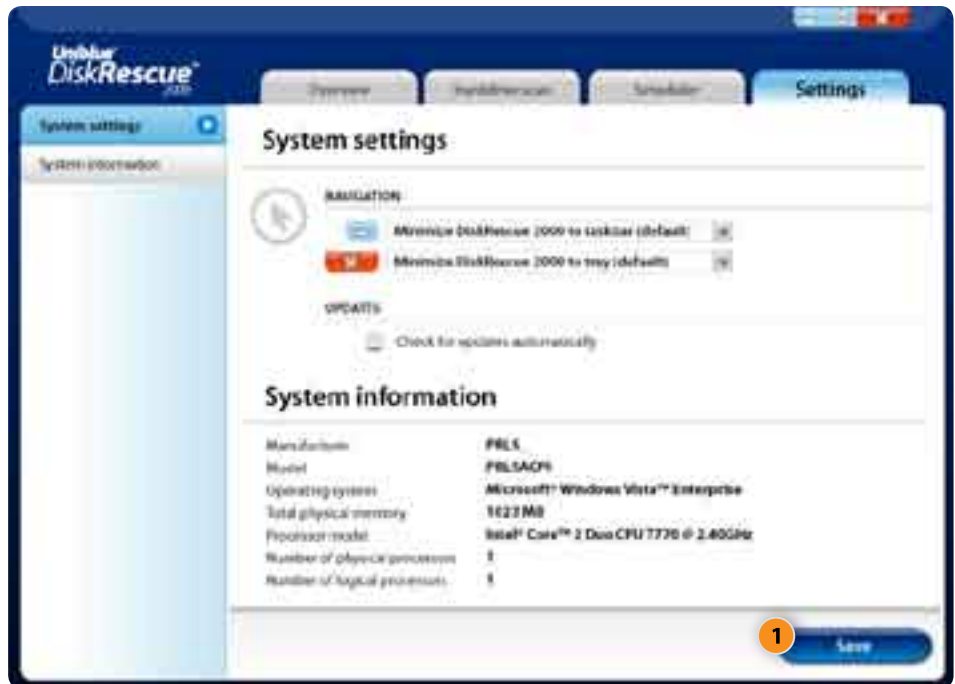
(Figure 11)

To access the scheduler screen, click on the Scheduler tab on the navigation panel (figure 11). This section allows you to set DiskRescue to defragment your hard disk automatically. This proactive approach to disk defragmentation gives you the reassurance of knowing that your hard disk will be running at optimal levels of performance as long as you have enough disk space available. There are a number of different settings which allow you to configure DiskRescue to match your precise requirements: ►

- 1 By clicking on the **Ongoing defragmentation** tick checkbox you set DiskRescue to automatically start defragmenting your hard drive whenever your PC has stood idle for five minutes. This is an ideal way to ensure that your PC's disk performance remains optimized without you being distracted.
- 2 You also have the option of running regular defrags at specific times. By default the **Do not schedule** radio button is selected and the full range of scheduling options grayed out. Click on the **Schedule** radio button to access the full range of scheduling options.
- 3 Having clicked the **Schedule** radio button you can use the various menu options to select whether you want to run a defrag, once, daily or weekly, and the time, day and date, as appropriate. This section also allows you choose the particular hard disk you want to scan, if your system has more than one drive.
- 4 The **Show me a warning...** tick box allows you to choose to receive a notification before DiskRescue starts the defrag.
- 5 Press the **Apply** button to save the scan schedule you have just created (*figure 11*).

Having scheduled disk defragments there is no need to then run DiskRescue constantly for the automatic defrags to launch. Instead DiskRescue starts a background process that will launch the scan without the main DiskRescue application running.

3.4 The Settings screen



(Figure 12)

The Settings screen can be accessed by clicking on the **Settings** tab (figure 12). The **Settings** screen allows you to modify how the application is closed and minimized and also displays system information for your PC. ►

The **System information** section makes detailed information about the settings and configuration of your system readily accessible, and identifies (*figure 12*):

Manufacturer: Which company produced your PC

Model: The model name of your system

Operating system: The operating system being used

Total physical memory: The amount of RAM in your PC

Processor model: The processor used in your computer

Number of logical processors: The number of cores on the chip

- 1 Any changes to the system settings can be saved by clicking on the **Save** button.



Address:

Uniblue Systems Ltd
Level 2, Regional Business Center
Achille Ferris Street
Msida, MSD 1751
Malta, Europe

Contact:

<http://www.liutilities.com/support/>